

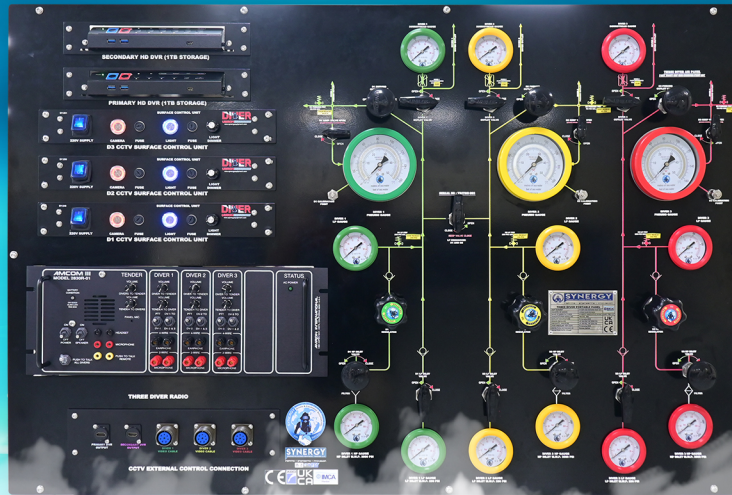
# THREE DIVER AIR CONTROL PANEL (HSE-INSHORE)



**SYNERGY**  
INNOVATIVE DIVING EQUIPMENT TRADING LLC

INSPIRING • ENGINEERING • INNOVATION

VAR-UK-INDIA-AZERBAIJAN-SINGAPORE



Synergy HSE Inshore Three Diver Panel is a compact and reliable surface-supplied diving control system designed for non-IMCA onshore diving operations.

Each diver is provided with independent high-pressure (HP) and low-pressure (LP) supply lines, ensuring safe, stable, and controlled air delivery during operations. The panel is equipped with individual depth gauges, pressure gauges, and flow control valves for precise monitoring and regulation of each diver's air supply.

Configurable inlet and outlet fittings can be provided from the side, top, or bottom based on operational requirements. It can be supplied as a portable unit for flexible deployment or frame-mounted for permanent installation, making it a versatile solution for a wide range of inshore diving applications.

## DIVER AIR SUPPLY PORTS

- Independent HP & LP control for each diver
- Quarter-turn valves for umbilical supply
- Needle valves for depth control
- Diver supply: 3/8" JIC male fittings
- Diver pneumo: 1/4" JIC male fittings

## CERTIFICATION & COMPLIANCE:

- IMCA D040 & D018 compliant (certification package available)
- FMEA (optional) for system reliability analysis
- Bureau Veritas witness testing for the entire system

## SPECIFICATION:

### GENERAL INFORMATION:

- Designed as per UK HSE standards for breathing air
- Two independent HP & LP lines for Diver 1 & Diver 2 & Diver 3
- Aluminium powder-coated flush mount panel with 316L tubing for all piping
- Portable or frame-mounted options
- 3-Diver Communication radio - Amcom
- 3-Diver CCTV system (2-Diver CCTV Optional)
- HD recorder for Diver CCTV
- Black box with 1TB hard drive
- USB(F) port for data collection
- 8-Pin Amphenol connection for CCTV umbilical

### HIGH-PRESSURE(HP) AIR DIVER SUPPLY

- One independent HP ports per diver
- 2.5" HP gauges (0-5000 PSI)
- HP supply regulated on-panel for safe air flow & pressure
- Quarter-turn valves to diver umbilical
- Needle valves for diver depth control
- Aquaflow 400 series regulators with 250 PSI relief
- Check valves on regulated supply

### LOW-PRESSURE(LP) AIR DIVER SUPPLY

- Individual LP ports per diver
- 2.5" LP gauges (0-500 PSI)
- Quarter-turn valves

### DIVER DEPTH MONITORING

- 4" dial Permacal depth gauges (0-164 FSW)
- Pressure relief valves set at 70 PSI
- Needle valves for line flush & calibration
- Individual Calibration points for Depth gauges
- Each Diver gauges and line color coded



Call Us

0044 795 196 6260  
 00971 50 564 8178

Email Us

ram@synergiequipment.com  
 info@synergiequipment.com

Visit Us

Al Qusais Industrial Area 1, Dubai.  
 www.synergiequipment.com

# THREE DIVER AIR CONTROL PANEL (HSE-INSHORE)



# SYNERGY

INNOVATIVE DIVING EQUIPMENT TRADING LLC

INSPIRING • ENGINEERING • INNOVATION

VAR-UK-INDIA-AZERBAIJAN-SINGAPORE



<b>SYNERGY</b> INNOVATIVE DIVING EQUIPMENT TRADING LLC		
INSPIRING • ENGINEERING • INNOVATION		
<b>THREE DIVER PORTABLE PANEL</b>		
PART NUMBER	SY-3DP-HSE-INSHORE-FMBF-3DV	<b>UK CA CE</b>
COUNTRY OF ORIGIN	United Arab Emirates	
NAME OF MANUFACTURER	SYNERGY INNOVATIVE DIVING EQUIP. TRD. LLC	
MANUFACTURER SERIAL NO.	TRITON - 892	
DATE OF MANUFACTURE	16 January 2026	
DESIGN PRESSURE	LP 300 PSI / HP 3000 PSI	
PNEUMATIC PRESSURE	LP 330 PSI / HP 3300 PSI	
OVER PRESSURE TEST DATE	19 January 2026	
INSPECTION / WITNESSED BY	Bureau Veritas	
INSPECTION AUTH. STAMP		



Call Us

0044 795 196 6260  
 00971 50 564 8178

Email Us

ram@synergyequipment.com  
 info@synergyequipment.com

Visit Us

Al Qusais Industrial Area I, Dubai.  
 www.synergyequipment.com